

# 2022 Scratch Doubles Tournament



**Oil Pattern Distance:** 40 Feet      **Reverse Brush Drop:** 36 Feet      **Oil Per Board:** 55 uL  
**Forward Oil Total:** 19.58 mL      **Reverse Oil Total:** 12.705 mL      **Volume Oil Total:** 32.285 mL  
**Forward Boards Crossed:** 356 Boards      **Reverse Boards Crossed:** 231 Boards      **Total Boards Crossed:** 587 Boards

Start	Stop	Loads	Speed	Crossed	Start	End	Feet	T.Oil
1	2L 2R	3	14	111	0.0	3.9	3.9	6105
2	6L 7R	1	18	28	3.9	6.4	2.5	1540
3	2L 2R	1	18	37	6.4	8.9	2.5	2035
4	7L 8R	1	18	26	8.9	11.4	2.5	1430
5	10L 9R	2	18	44	11.4	16.5	5.1	2420
6	11L 10R	3	18	60	16.5	24.1	7.6	3300
7	12L 11R	1	18	18	24.1	26.6	2.5	990
8	13L 12R	2	18	32	26.6	31.7	5.1	1760
9	2L 2R	0	22	0	31.7	40.0	8.3	0

Forward Reverse More

Start	Stop	Loads	Speed	Crossed	Start	End	Feet	T.Oil
1	2L 2R	0	30	0	40.0	30.0	-10.0	0
2	14L 13R	1	18	14	30.0	27.5	-2.5	770
3	13L 12R	1	14	16	27.5	25.6	-1.9	880
4	12L 11R	3	14	54	25.6	19.7	-5.9	2970
5	10L 9R	1	14	22	19.7	17.8	-1.9	1210
6	9L 8R	1	14	24	17.8	15.9	-1.9	1320
7	7L 7R	1	14	27	15.9	14.0	-1.9	1485
8	2L 2R	2	14	74	14.0	10.1	-3.9	4070
9	2L 2R	0	14	0	10.1	0.0	-10.1	0

Forward Reverse More

Conditioner:  
Type In or Select One

TransferType:  
Type In or Select One

Forward



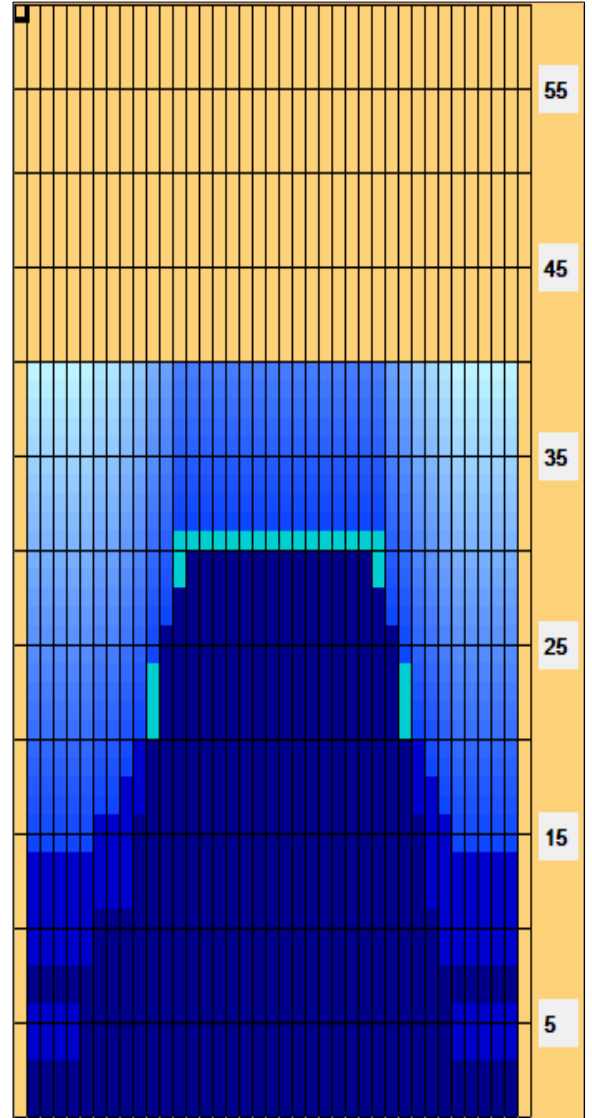
Reverse



Combined



Buff



Item	3L-7L:18L-18R	8L-12L:18L-18R	13L-17L:18L-18R	18L-18R:17R-13R	18L-18R:12R-8R	18L-18R:7R-3R
Description	Outside Track:Middle	Middle Track:Middle	Inside Track:Middle	Middle: Inside Track	Middle:Middle Track	Middle:Outside Track
Track Zone Ratio	3.53	1.76	1.01	1	1.46	3.75

